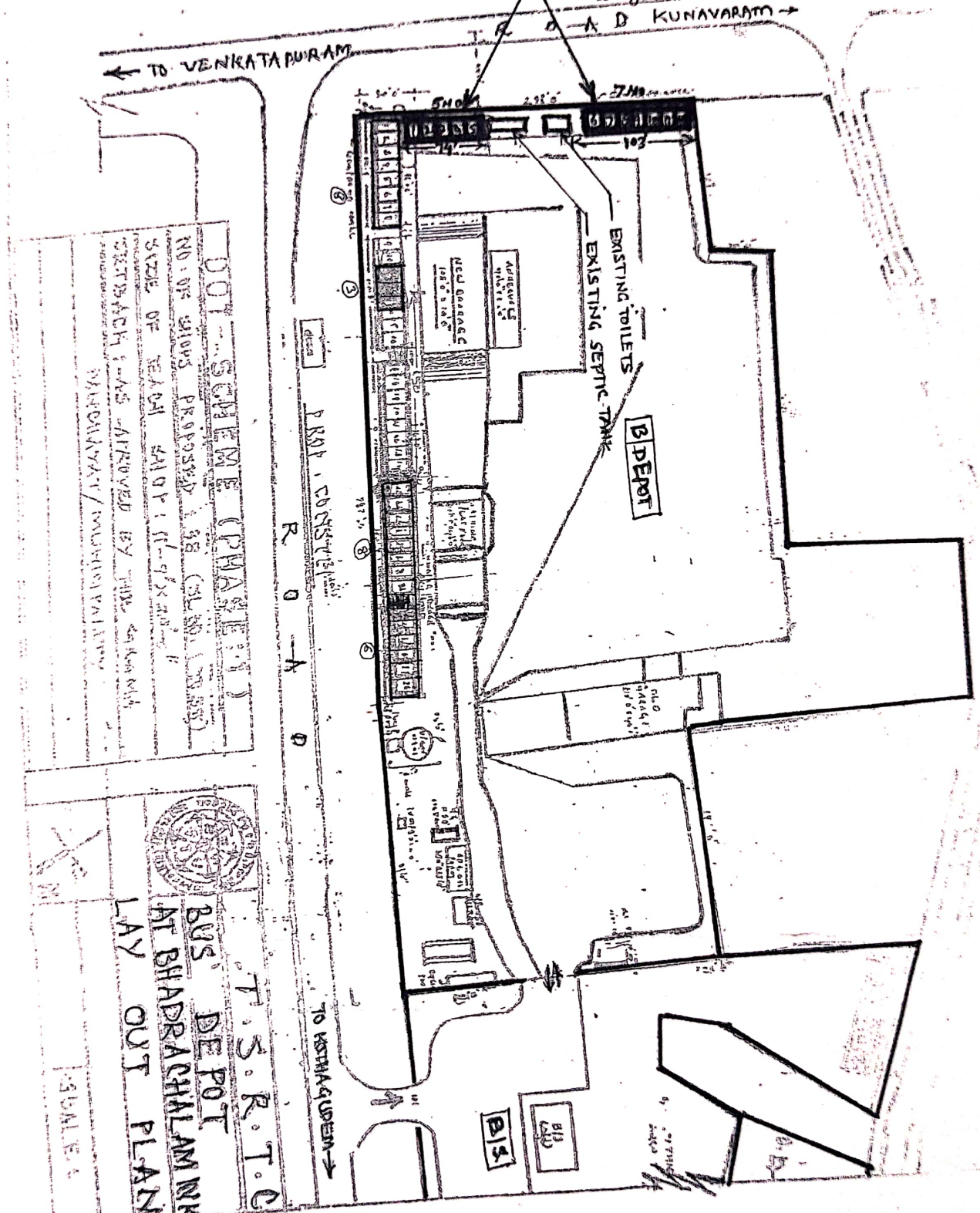


REVISED PROPOSAL
 Proposed construction of
 DOT shops - 12 NO. Ground Floor & 12 NO OFF
 Along KUNAVARAM road. In B/ Dept, BDCM



DOT SCHEME (PHASE II)
 NO. OF SHOPS PROPOSED: 28 (G.F. & OFF)
 SIZE OF EACH SHOP: 11'-9" x 12'
 SETBACKS AS APPROVED BY THE ENGINEER
 MUNICIPALITY/MUNICIPALITY

T.S.R.T.C.
 BUS DEPOT
 AT BHADRACHALAM NIKKAM DIST.
 LAY OUT PLAN



DY. EXECUTIVE ENGINEER
 T.S.R.T.C. KHAMMAM
 2/2/20

REP. Revised proposal
 Proposed shops: G.F
 12 Nos of size: 11'-9" x 12'
 G.F
 12 Nos of size: 11'-9" x 12'
 F.F
 along Kunavararam road
 in B/ Dept site at
 Bhadrachalam.

EXISTING DOT SHOPS: 25 NOS
 SIZE: 11'-9" x 22'